

ADDENDUM TO BIDS #3

DATE: Friday, April 17, 2026

TO: All Bidders

PROJECT: City Parks Security Cameras
City of Jeannette
Westmoreland County, PA

OWNER: The City of Jeannette
110 South Second Street
Jeannette, PA 15644

NUMBER: ADDENDUM TO BIDS #3

NOTICE IS HEREBY GIVEN, that the City of Jeannette, PA hereby issues this Addendum Number Three for bidding purposes for the above listed project.

2.0 CONTENT OF PROPOSALS

Scope of Services and Camera Location Maps: Revised - See Attached.

The undersigned hereby acknowledges receipt of the addenda listed above and has taken the information contained therein into full consideration in the formulation of the Bid. Failure to acknowledge receipt of each addendum may be cause for rejection of the Bid.

Company Name: _____

Printed Name: _____

Title: _____

Signature: _____

Date: _____

SCOPE OF SERVICES

2.1 SUMMARY

- A. This section includes the design, furnishing, installation, configuration, and testing of a complete video surveillance system for five (5) municipal parks.
- B. The system shall provide:
 - Real-time video monitoring at the police station
 - Recording and playback capability
 - Coverage of designated problem areas, including sports courts and small field areas
- C. Work includes:
 - Cameras and mounting hardware
 - Installation of a new camera mounting pole at one (1) designated park location
 - Wireless or cellular communication systems
 - Solar power system (at designated sites)
 - Network equipment
 - Integration with existing City systems (if applicable)

2.2 SYSTEM DESCRIPTION

- A. The system shall include a total of eighteen (18) camera channels across all park locations, including ten (10) fixed turret cameras and two (2) multi-sensor (4-lens) cameras. Ten (10) cameras shall be solar-powered, and two (2) shall be utility-powered. Camera quantities are fixed. Contractor shall not increase or decrease the number of cameras without written approval from the City
- B. The system shall consist of fixed-position IP cameras connected via a wireless and/or cellular network to a centralized monitoring location at the police station.
- C. The system is intended to:
 - Deter unwanted activity
 - Provide real-time situational awareness
 - Support post-incident review
- D. Cameras shall be positioned to monitor targeted areas, not entire parks.
- E. The system will be monitored intermittently by police officers and administrative staff and will not be continuously monitored 24/7.

2.3 SUBMITTALS

Contractor shall submit the following for approval:

- A. Drawings showing:
 - Camera mounting details
 - Final camera orientation (based on field conditions)
- B. Product data sheets (cut sheets) for all equipment
- C. Network design, including:
 - Wireless and/or cellular architecture
 - Bandwidth calculations

- Equipment specifications
- D. Storage calculations demonstrating compliance with retention requirements
- E. Solar system design (if applicable), including:
 - Load calculations
 - Battery capacity
- F. Contractor shall provide a camera schedule identifying all eighteen (18) camera channels and their respective locations.

2.4 QUALITY ASSURANCE

- A. All equipment shall be new and of commercial/municipal grade.
- B. System shall be installed by qualified personnel experienced in surveillance system installations.
- C. All equipment shall comply with applicable FCC and local regulations.

2.5 SUBSCRIPTIONS AND ONGOING SERVICES

- A. The City will be responsible for all ongoing subscription costs associated with the system, including but not limited to:
 - Cellular data service (LTE/5G)
 - Cloud-based video services (if applicable)
 - Software licensing renewals (if applicable)
- B. Contractor shall include in their bid:
 - All equipment required to enable subscription-based services (e.g., cellular modems, SIM-compatible devices, antennas)
 - Initial setup and configuration of such services
- C. Contractor shall provide:
 - A detailed list of all required subscriptions
 - Estimated monthly and annual costs for each service
 - Recommended service providers (if applicable)
- D. Contractor shall coordinate with the City during system commissioning to:
 - Activate required services
 - Ensure full system functionality

2.6 CAMERA LOCATION SCHEDULE

Contractor shall provide and install cameras at the following locations as defined by the City. Camera quantities and types are fixed and shall not be modified without written approval.

- A. Altman Park
 - One (1) turret camera (utility-powered), mounted to an existing building
 - One (1) multi-sensor (4-lens) camera (solar-powered), mounted to an existing pole
- B. Arlington Park
 - Two (2) turret cameras (solar-powered), mounted to an existing pole
- C. 3rd Street Tot Lot
 - Two (2) turret cameras (solar-powered), mounted to an existing pole

- D. West Jeannette Park
 - Two (2) turret cameras (solar-powered), mounted to an existing pole
 - One (1) turret camera (utility-powered), mounted to an existing building
 - One (1) multi-sensor (4-lens) camera (solar-powered), mounted to an existing pole
- E. Agnew Park
 - Two (2) turret cameras (solar-powered), mounted to one (1) new pole
- F. Multi-sensor (4-lens) cameras shall count as four (4) camera channels for recording and licensing purposes.
- G. System Summary
 - Total physical cameras: 12
 - Total camera channels: 18

2.7 CAMERAS

A. General Requirements

1. The total number of camera channels shall be eighteen (18). The multi-sensor (4-lens) camera shall count as four (4) camera channels for recording and licensing purposes unless otherwise specified by the manufacturer.
2. Cameras shall be fixed-position turret-style cameras as the basis of design. unless otherwise specified. PTZ cameras are not permitted.
3. Cameras shall meet or exceed the following minimum specifications:
 - Resolution: Minimum 8MP (4K)
 - Lens: Motorized varifocal (2.8mm–12mm), unless otherwise specified
 - Wide Dynamic Range (WDR): Minimum 120 dB
 - Low-light performance: ≤ 0.01 lux (color)
 - Infrared illumination: Minimum 100 ft range
 - Frame rate: Minimum 20 FPS (30 FPS preferred)
4. Environmental:
 - Weatherproof rating: IP67 or better
 - Vandal resistance: IK10 rating
 - Operating temperature: Suitable for Pennsylvania climate conditions

B. Multi-Sensor (4-Lens) Camera

- A. Contractor shall provide two (2) multi-sensor cameras with four (4) integrated lenses at West Jeannette Park and Altman Park in the locations identified in the Contract Documents.
- B. The multi-sensor camera shall:
 - Provide panoramic coverage of the designated area
 - Deliver a minimum of 8MP resolution per sensor or equivalent
 - Allow independent adjustment of each lens direction
 - Be compatible with the selected video management system
- C. The multi-sensor camera shall be used to provide wide-area situational awareness and reduce the number of individual cameras required.

2.8 VIDEO ANALYTICS

- A. Cameras shall support onboard or system-based analytics, including:
 - Motion detection
 - Intrusion detection zones
 - Loitering detection
- B. System shall allow configuration of alerts for after-hours activity.

2.9 MOUNTING AND INSTALLATION

- A. Cameras shall be pole-mounted unless otherwise approved.
- B. Mounting height shall be approximately 12 to 18 feet above grade.
- C. Each pole-mounted location shall generally include two (2) cameras oriented in different directions to provide:
 - Coverage of the primary activity area (court/field)
 - Coverage of adjacent surrounding areas
- D. Contractor shall coordinate final camera orientation in the field while maintaining coverage of designated areas.
- E. Contractor shall furnish and install one (1) new pole at Agnew Park as identified in the Contract Documents.
 - 1. Poles shall meet the following minimum requirements:
 - Material: Galvanized steel or approved equal
 - Height: 15–20 feet above grade
 - Designed for outdoor municipal use
 - Capable of supporting cameras, mounting hardware, and associated equipment
 - 2. Cameras shall be mounted at a height of approximately 12 to 18 feet above grade.
 - 3. Pole shall be designed to support all mounted equipment, including:
 - Cameras
 - Solar panels
 - Wireless or cellular communication equipment
 - Battery enclosures
 - 4. Pole height and configuration shall ensure:
 - No obstruction of camera fields of view
 - Proper solar panel orientation
 - Safe and accessible maintenance
 - 5. Structural Requirements:
 - Pole shall be designed to meet applicable wind load requirements
 - Foundation shall be sized based on soil conditions and equipment load
 - 6. Contractor shall provide and install:
 - Concrete foundations/footings
 - Anchor bolts and base plates
 - Conduit pathways within or adjacent to the pole

- Equipment mounting provisions (cameras, network devices, solar components if applicable)
7. Contractor shall be responsible for all excavation, installation, and site restoration.
- F. At locations where existing poles (e.g., streetlights) are used:
- Contractor shall verify structural suitability
 - Contractor shall coordinate mounting and electrical connections

2.10 NETWORK AND COMMUNICATION SYSTEM

- A. Available internet bandwidth at the police station is currently unknown
- B. Contractor shall:
- Provide estimated bandwidth requirements for the system
 - Design system to operate efficiently under limited bandwidth conditions
 - Configure system for optimized performance, including compression and motion-based transmission
- C. Contractor shall provide a complete communication system connecting all cameras to the police station.
- D. Due to site constraints, including lack of clear line-of-sight, Contractor shall propose a reliable solution which may include:
- Point-to-point or point-to-multipoint wireless systems with intermediate relay points
 - Cellular (LTE/5G) connectivity
 - Hybrid systems
- E. Consumer-grade WiFi systems are not acceptable.
- F. Contractor shall design the system to ensure:
- Reliable real-time video transmission
 - Adequate bandwidth for all cameras
 - Secure communication
- G. Cellular-based solutions are acceptable and encouraged where appropriate due to site constraints. The City will be responsible for ongoing cellular service costs.
- H. The City utilizes FirstNet as its preferred cellular provider. Contractor shall provide equipment compatible with FirstNet services and coordinate activation with the City.

2.11 VIDEO MANAGEMENT SYSTEM (VMS)

- A. The City does not currently utilize a centralized Video Management System (VMS). Existing cameras operate using local Network Video Recorders (NVRs) and are accessed via EZStation.
- B. Contractor shall provide a complete, centralized VMS solution capable of
- Live viewing of all camera feeds
 - Playback of recorded video
 - User access control and permissions
 - Integration of all cameras included in this project
- C. The system shall support a minimum of eighteen (18) camera channels
- D. System shall be scalable for future expansion

- E. Contractor shall provide a professional, open-platform Video Management System (VMS) suitable for municipal use and capable of supporting all system requirements.
- F. Contractor shall include all required licensing for full system operation

2.12 MONITORING EQUIPMENT

- A. Contractor shall provide a monitoring workstation at the police station, including:
 - One (1) desktop workstation or equivalent
 - Minimum of two (2) monitors suitable for live video monitoring
 - All required software and configuration
- B. System shall support live monitoring by police officers and administrative staff.

2.13 STORAGE

- A. System shall provide a minimum of thirty (30) days of video retention.
- B. Recording shall be motion-based as configured by the City.
- C. Storage may be provided via local NVR, server-based storage, or cloud-based solutions as proposed by the Contractor.

2.14 POWER SYSTEMS

- A. Utility-Powered Sites
 - 1. Cameras at designated locations shall utilize existing City-owned electrical infrastructure, including street lighting circuits.
 - 2. The City confirms that:
 - Existing poles and circuits are City-owned
 - Tapping into these circuits is permitted for this project
 - 3. Contractor shall be responsible for:
 - Making all necessary electrical connections
 - Providing all wiring, conduit, and protective enclosures
 - Ensuring all connections comply with applicable electrical codes
 - 4. Contractor shall coordinate with the City regarding:
 - Access to electrical infrastructure
 - Shutdowns (if required)
 - Final connection procedures
 - 5. All electrical work shall be performed by qualified personnel in accordance with applicable codes and standards.
- B. Solar-Powered Site
 - 1. Contractor shall provide complete solar power systems at all designated solar-powered camera locations.
 - 2. System shall include:
 - Solar panels
 - Battery storage
 - Charge controller
 - Mounting hardware

3. System shall be designed to support continuous operation with a minimum of three (3) days autonomy without sunlight.
 - Design shall account for winter conditions in Pennsylvania.
4. Shared Solar Configuration:
 - One solar system may support multiple cameras mounted on the same pole. Contractor shall size systems accordingly and optimize design to minimize total installations.
5. Solar systems shall be designed to meet project requirements without excessive oversizing or undersizing of panels or battery capacity.
6. Solar systems shall be sized to support all connected equipment, including cameras, cellular or wireless communication devices, and any ancillary equipment.

2.15 INSTALLATION

- A. Install all equipment in accordance with manufacturer recommendations and approved submittals.
- B. Ensure all equipment is securely mounted and protected from weather and vandalism.

2.16 TESTING AND COMMISSIONING

- A. Contractor shall test the complete system to verify:
 - Camera operation
 - Network connectivity
 - Video transmission to police station
 - Recording functionality
- B. Demonstrate system operation to City representatives.

2.17 TRAINING

- A. Contractor shall provide training to City personnel on:
 - System operation
 - Video retrieval
 - Basic troubleshooting

2.18 WARRANTY

- A. Provide a minimum one (1) year warranty on all equipment and installation.

2.19 SIGNAGE

- A. The City will be responsible for the installation of surveillance signage at all park locations.




2.20 MAINTENANCE

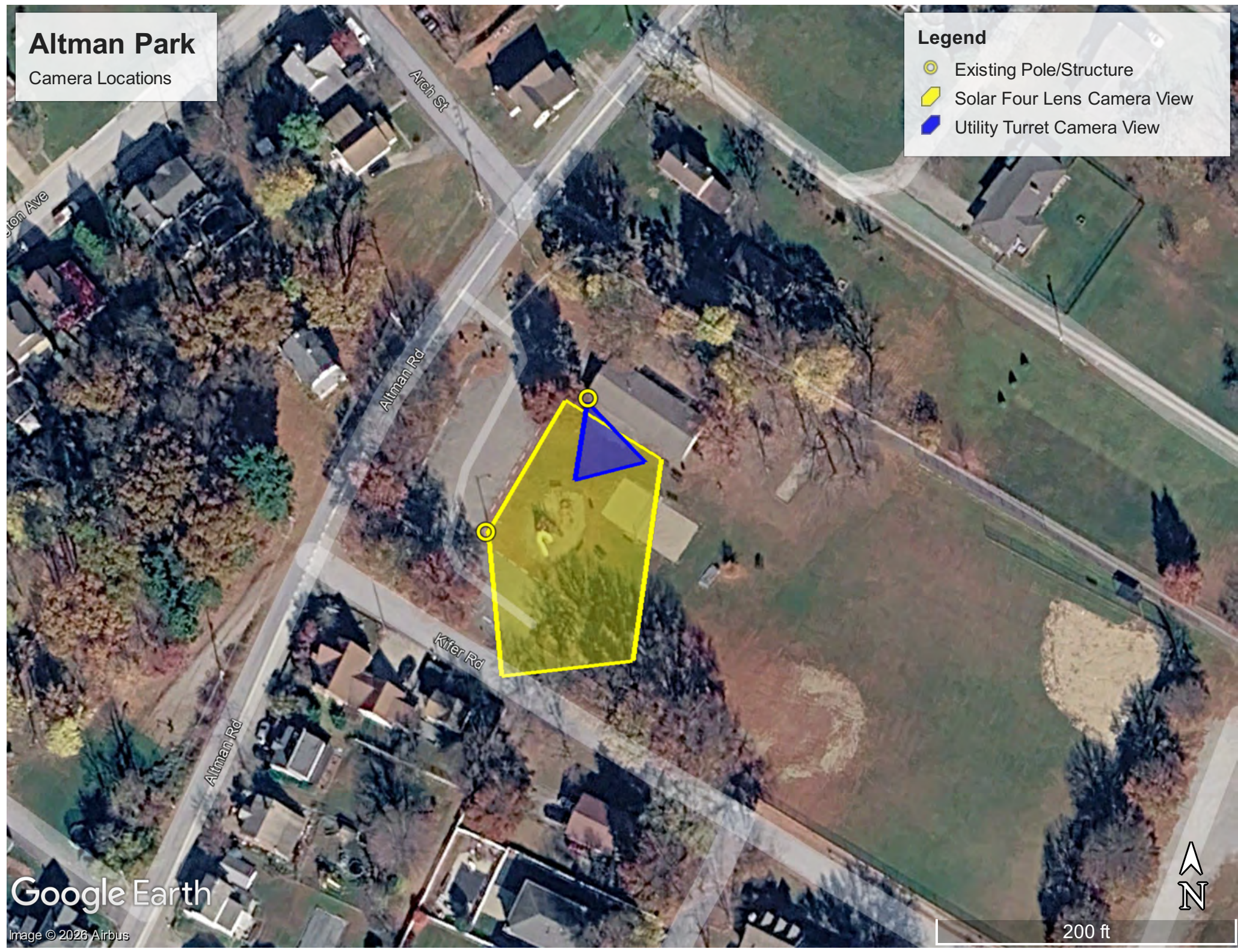
- A. The City will be responsible for long-term maintenance following the warranty period. Contractors may provide optional maintenance pricing.

Altman Park

Camera Locations

Legend

-  Existing Pole/Structure
-  Solar Four Lens Camera View
-  Utility Turret Camera View



Google Earth

Image © 2026 Airbus



200 ft

Arlington Park

Camera Locations

Legend

- Existing Pole/Structure
- Solar Turret Camera View



Google Earth

Image © 2026 Airbus



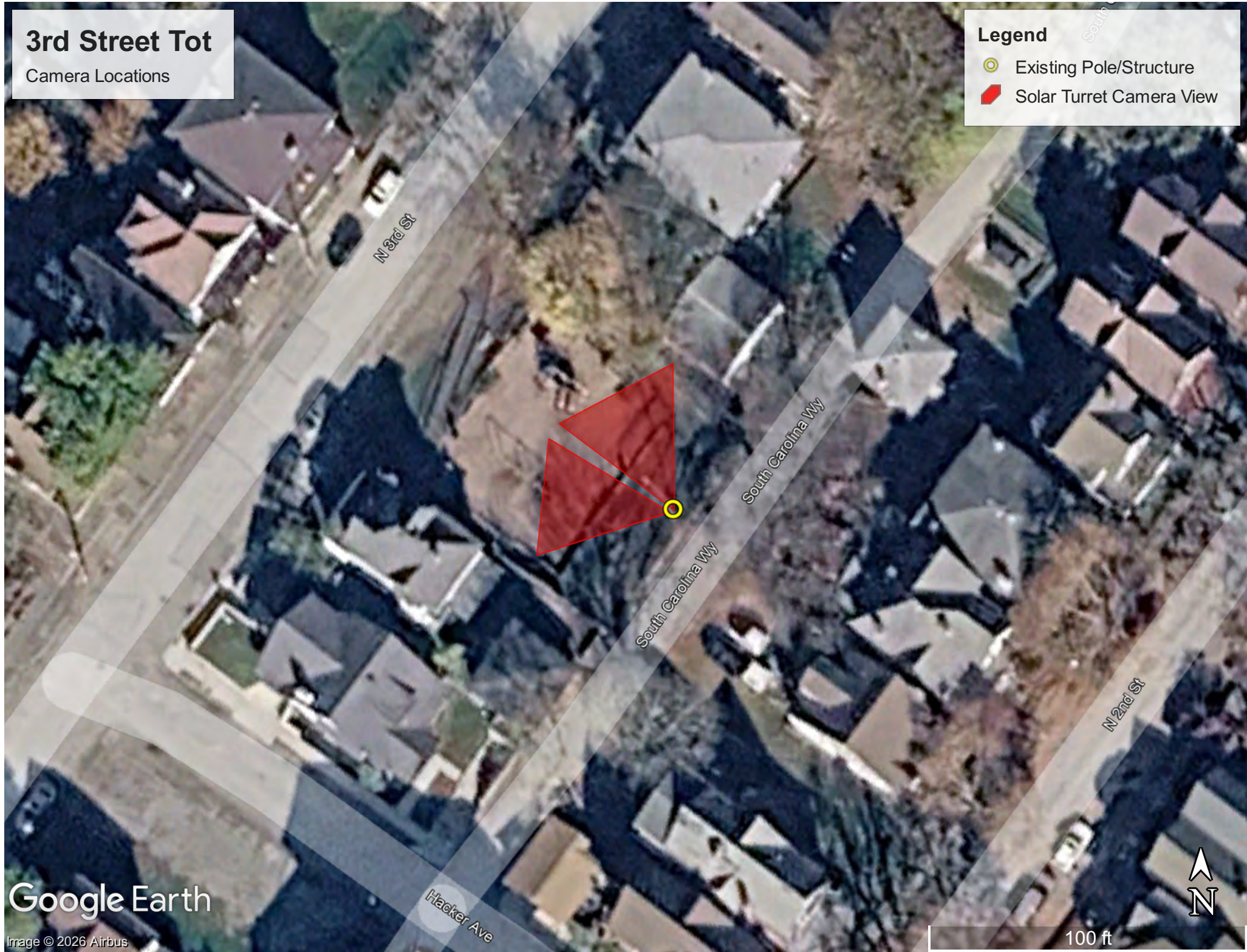
100 ft

3rd Street Tot

Camera Locations

Legend

- Existing Pole/Structure
- Solar Turret Camera View



Google Earth

Image © 2026 Airbus

Hacker Ave

100 ft



West Jeannette Park

Camera Locations

Legend

- Existing Pole/Structure
- Solar Four Lens Camera View
- Solar Turret Camera View
- Utility Turret Camera View



Google Earth



Image © 2026 Airbus

500 ft

Agnew Park

Camera Locations

Legend

-  New Pole Location
-  Solar Turret Camera View



Google Earth

Image © 2026 Airbus

200 ft

